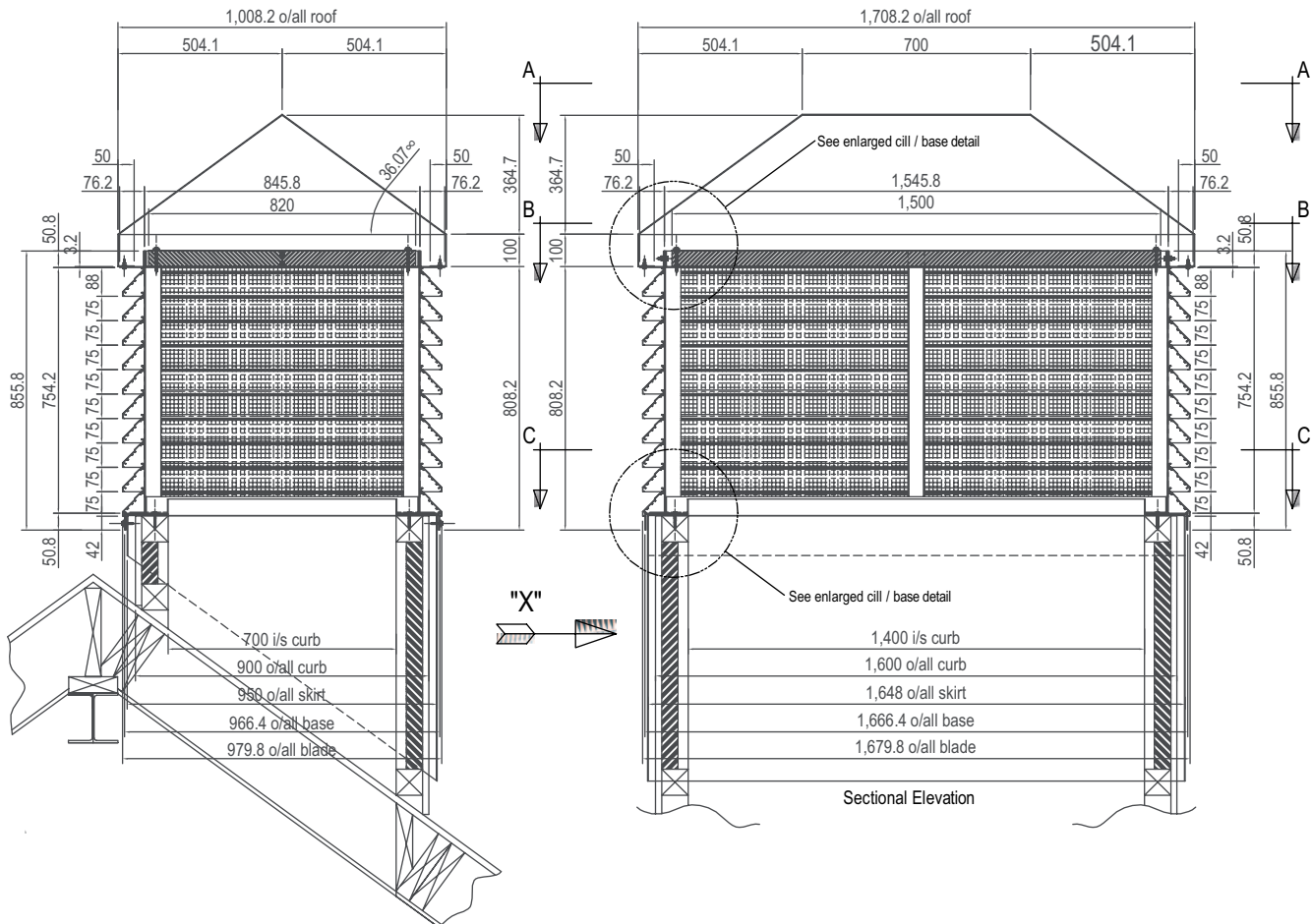


Case Study:



Brief: A wall and passive terminal with structural curbs.

Design: Employing 3 D modelling and a structural engineer we designed a system including moulding the roof curbs to support and fit passive stacks on a split roof line and provide a sealed weather split level curb.



General Notes

75mm blade (CSA137) on a 75mm blade pitch c/w birdmesh screen to the rear. Upstand skirt to be manufactured from 2mm thick aluminium (fully welded and dressed) c/w M8 dia holes for self drill fixing down to the timber curb (Curb by others) Unit base manufactured from 76.2 x 50.8 x 3.2 Alu angle with 50.8 x 50.8 x 3.2 alu angle support frame. Vertical corner posts 50.8 x 50.8 x 3.2 Alu angle with two central mullions on larger face being 50.8 x 25.4 x 3.2 Alu channel (knotched top and bottom). Roof support rail 76.2 x 50.8 x 3.2 Alu angle c/w 50.8 x 3.2 alu flat packer between corners post and mullions and an internal 50.8 x 50.8 x 3.2 alu angle to support the insulated internal secondary roof panels (APL50 Acoustic panels - 50mm thick c/w central joint clip fixed from external face with self drill screws). Roof panels to be manufactured from 2mm thick aluminium c/w M6 dia rivnut inserts (M6 x 25 pan head setpins) with 36.07 degree roof angle to match building roof angle.